



PROPERTY HIGHLIGHTS*



3391 Sq Ft



5 Bedrooms

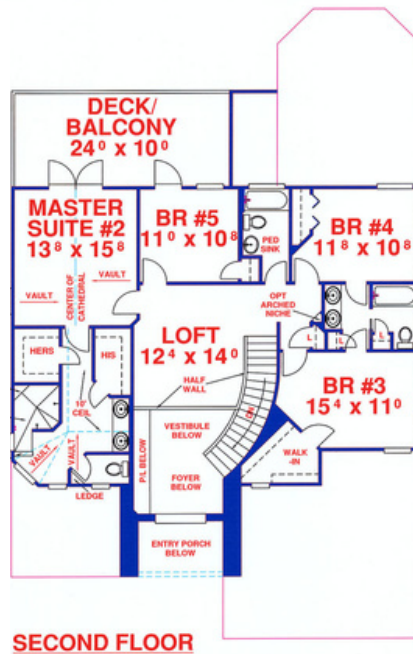
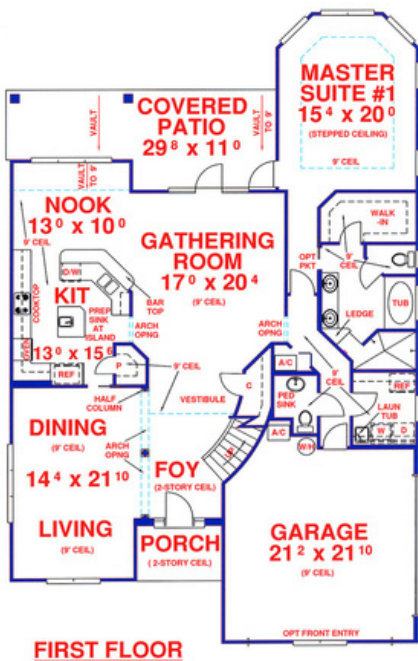


4.5 Bathrooms

* Figures do not include a finished basement

OTHER KEY FEATURES:

- Two-story
- Double height entryway
- Two primary suites
- Loft area
- Slab or basement foundation
- Garage can be front or side entry



**WANT TO
LEARN MORE?**

Get in touch today!



☎ 785-456-9922

✉ info@fpcustomhomes.com

🌐 www.fpcustomhomes.com